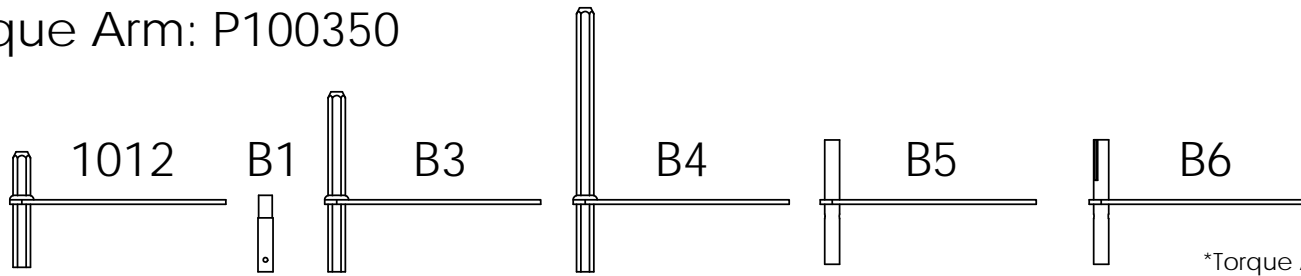


Rivet Used for Torque Arm: P100350



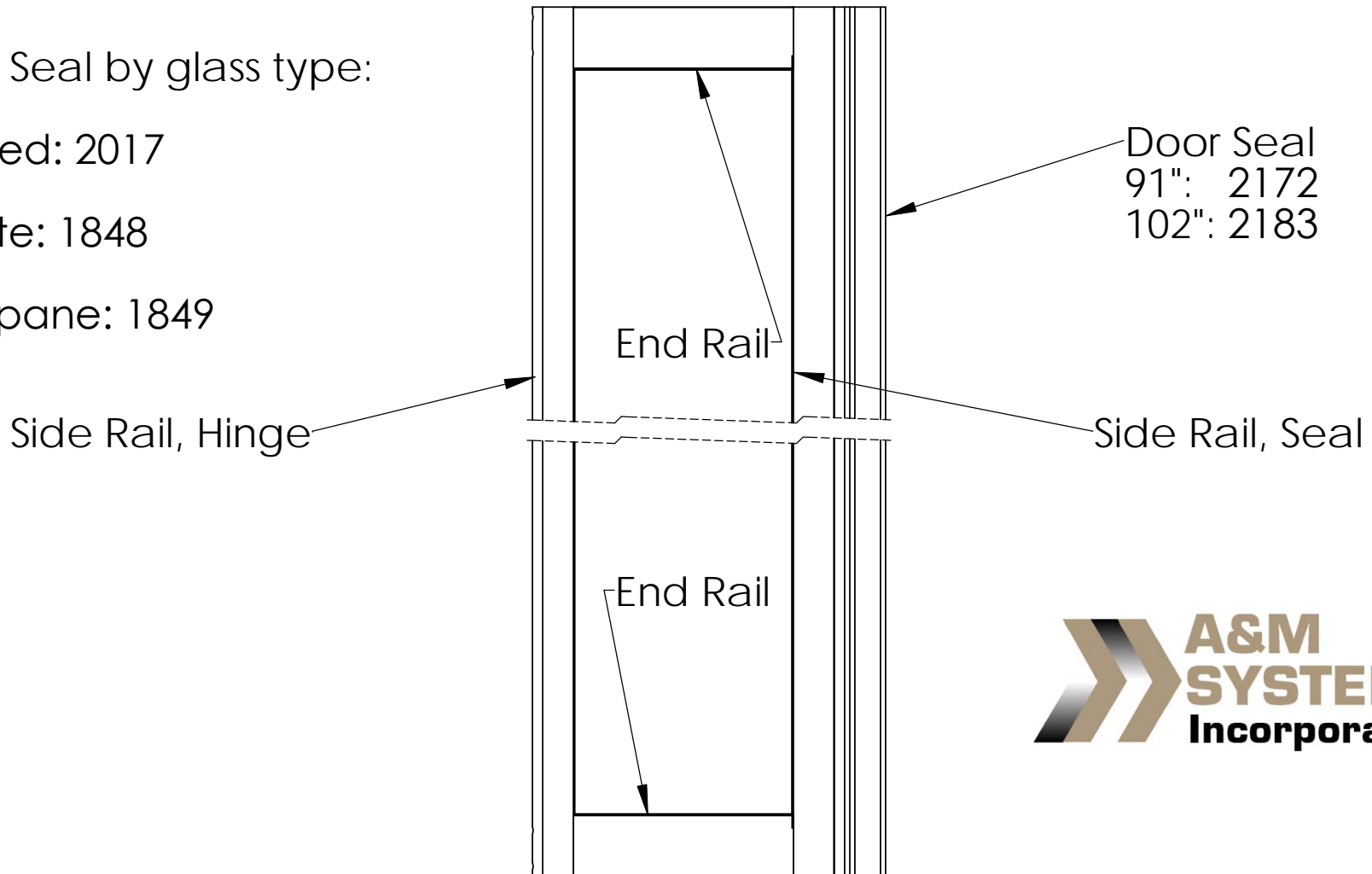
*Torque Arm Details on next pages

Glazing Seal by glass type:

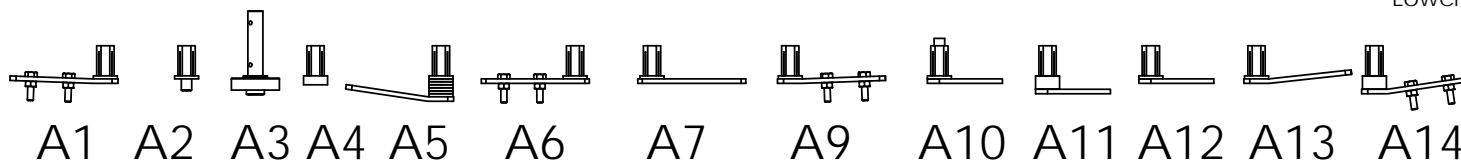
Tempered: 2017

Laminate: 1848

Thermopane: 1849



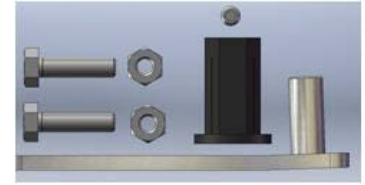
*Lower Pivot Details on next pages



A&M Systems Door A Option Detail

K9032 (A1)

| Qty | U/M | Part No | Description | Notes |
|-----|-----|---------|---------------------------|-------|
| 1 | ea | P100062 | Set Screw, 1/4-20 x 3/16" | |
| 2 | ea | P100030 | Nylock Nut, 1/4-20 | |
| 2 | ea | P100031 | Bolt, 1/4-20 x 1" | |
| 1 | ea | 1541.1 | Lower Pivot, 2° SS | |
| 1 | ea | 1544 | Hex Bushing | |



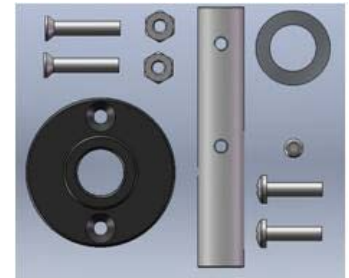
K9033 (A2)

| Qty | U/M | Part No | Description | Notes |
|-----|-----|---------|---------------------------|-------|
| 1 | ea | P100062 | Set Screw, 1/4-20 x 3/16" | |
| 1 | ea | 1547 | Pin, 7/16" x 1-3/4" | |
| 1 | ea | 1544 | Hex Bushing | |



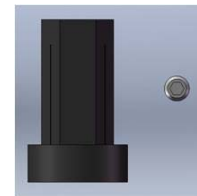
K9034 (A3)

| Qty | U/M | Part No | Description | Notes |
|-----|-----|---------|---------------------------|-------|
| 1 | ea | P100062 | Set Screw, 1/4-20 x 3/16" | |
| 2 | ea | P100029 | Nylock Nut, 10-32 | |
| 2 | ea | P100358 | Screw, 10-32 x 1" | |
| 1 | ea | P100034 | Washer, 1" x 5/8" | |
| 1 | ea | 1536 | Lower Pin | |
| 2 | ea | P100028 | Screw, 10-32 x 1/2" | |
| 1 | ea | 1534 | Lower Pivot | |



K9035 (A4)

| Qty | U/M | Part No | Description | Notes |
|-----|-----|---------|----------------------------|-------|
| 1 | ea | P100062 | Set Screw, 1/4-20 x 3/16" | |
| 1 | ea | 1561 | Hex Bushing, 3/8" shoulder | |



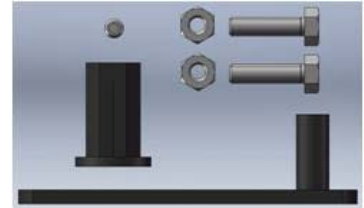
K9040 (A5)

| Qty | U/M | Part No | Description | Notes |
|-----|-----|--------------|---------------------------|-------|
| 1 | ea | P100062 | Set Screw, 1/4-20 x 3/16" | |
| 1 | ea | 1701, Rev. C | Lower Pivot, 8.5°, SS | |
| 1 | ea | 1702, Rev A | Spacer | |
| 1 | ea | 1544 | Hex Bushing | |



K9041 (A6)

| Qty | U/M | Part No | Description | Notes |
|-----|-----|---------|---------------------------|-------|
| 1 | ea | P100062 | Set Screw, 1/4-20 x 3/16" | |
| 2 | ea | P100030 | Nylock Nut, 1/4-20 | |
| 2 | ea | P100031 | Bolt, 1/4-20 x 1" | |
| 1 | ea | 1707 | Lower Pivot | |
| 1 | ea | 1544 | Hex Bushing | |



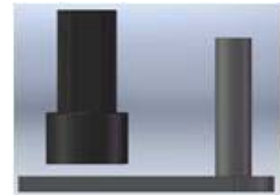
K9042 (A7)

| Qty | U/M | Part No | Description | Notes |
|-----|-----|---------|---------------------------|-------|
| 1 | ea | P100062 | Set Screw, 1/4-20 x 3/16" | |
| 1 | ea | 1707 | Lower Pivot | |
| 1 | ea | 1544 | Hex Bushing | |



K9043 (A8)

| Qty | U/M | Part No | Description | Notes |
|-----|-----|---------|----------------------------|-------|
| 1 | ea | 1745 | Lower Pivot | |
| 1 | ea | 1754 | Hex Bushing, 5/8" shoulder | |



K9044 (A9)

| Qty | U/M | Part No | Description | Notes |
|-----|-----|---------|---------------------------|--|
| 1 | ea | P100062 | Set Screw, 1/4-20 x 3/16" | Same as K9032 only lower pivot is E-coated Carbon Steel |
| 2 | ea | P100030 | Nylock Nut, 1/4-20 | |
| 2 | ea | P100031 | Bolt, 1/4-20 x 1" | |
| 1 | ea | 1764 | Lower Pivot, 2°, CS | |
| 1 | ea | 1544 | Hex Bushing | |



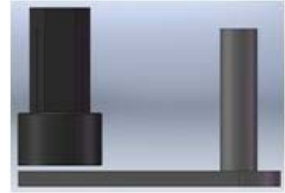
K9045 (A10)

| Qty | U/M | Part No | Description | Notes |
|-----|-----|---------|---------------------------|--|
| 1 | ea | P100062 | Set Screw, 1/4-20 x 3/16" | 1780 hex busing has through hole |
| 1 | ea | 1745 | Lower Pivot | |
| 1 | ea | 1780 | Hex Bushing, through hole | |



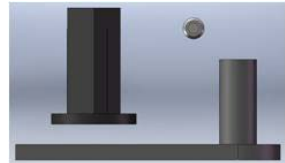
K9046 (A11)

| Qty | U/M | Part No | Description | Notes |
|-----|-----|---------|-----------------------------|-------|
| 1 | ea | 1745 | Lower Pivot | |
| 1 | ea | 1786 | Hex Bushing, 9/16" shoulder | |



K9047 (A12)

| Qty | U/M | Part No | Description | Notes |
|-----|-----|---------|---------------------------|-------|
| 1 | ea | P100062 | Set Screw, 1/4-20 x 3/16" | |
| 1 | ea | 1793 | Lower Pivot | |
| 1 | ea | 1544 | Hex Bushing | |



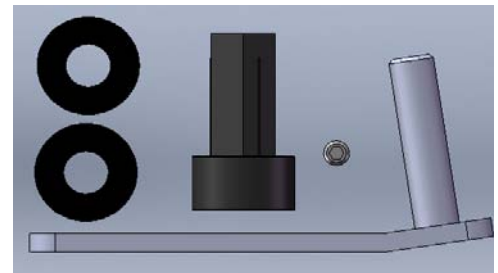
K9048 (A13)

| Qty | U/M | Part No | Description | Notes |
|-----|-----|---------|---------------------------|-------|
| 1 | ea | P100062 | Set Screw, 1/4-20 x 3/16" | |
| 1 | ea | 1795 | Lower Pivot, 6° bend | |
| 1 | ea | 1544 | Hex Bushing | |
| 2 | ea | P100030 | Nylock Nut, 1/4-20 | |
| 2 | ea | P100031 | Bolt, 1/4-20 x 1" | |



K9056 (A14)

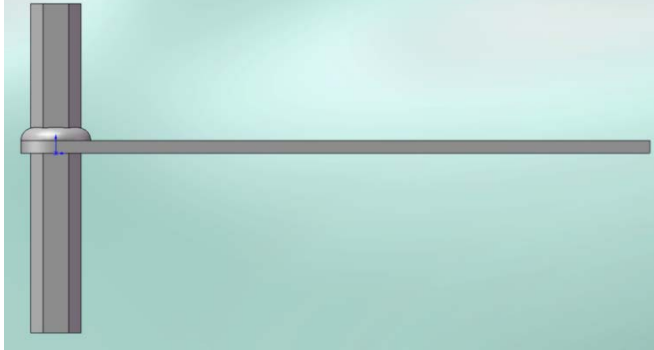
| Qty | U/M | Part No | Description | Notes |
|-----|-----|--------------|-----------------------------|-------|
| 1 | ea | P100062 | Set Screw, 1/4-20 x 3/16" | |
| 1 | ea | 1701, Rev. C | Lower Pivot, 8.5° | |
| 1 | ea | 1786 | Hex Bushing, 9/16" Shoulder | |
| 2 | ea | 1863 | 1 x 7/16 x 1/8 ABS Washer | |



A&M Systems Doors B Option Detail

Standard

| Qty | U/M | Part No | Description |
|-----|-----|---------|-----------------------|
| 1 | ea | AR1012 | 9" Torque Arm, 5" Hex |



1619.1 Pin (B1)

| Qty | U/M | Part No | Description |
|-----|-----|---------|--|
| 1 | ea | 1619.1 | 5/8" round to 9/16" round, 10-32 hole |



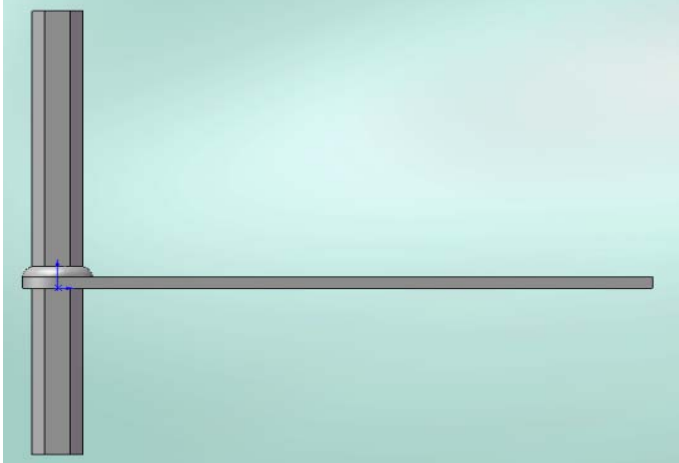
Nothing (B2)

| Qty | U/M | Part No | Description |
|-----|-----|---------|-------------|
| -- | | - | - |

A&M Systems Doors B Option Detail

1759 Torque Arm (B3)

| Qty | U/M | Part No | Description |
|-----|-----|---------|-------------------------|
| 1 | ea | 1759 | 9" Torque Arm, 7.5" Hex |



1789 Torque Arm (B4)

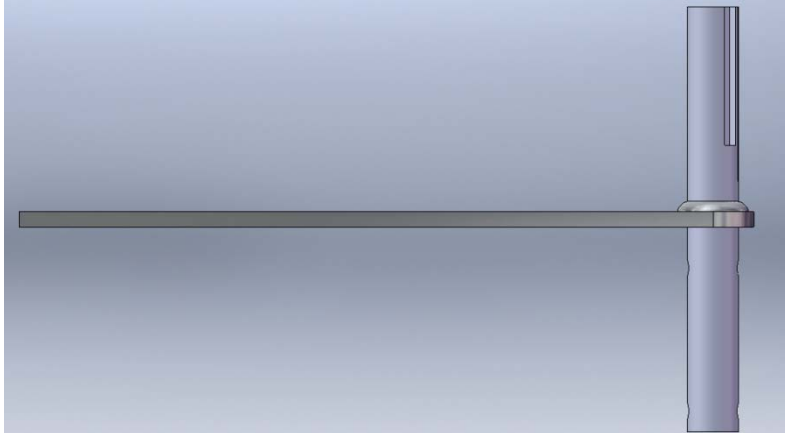
| Qty | U/M | Part No | Description |
|-----|-----|---------|-----------------------|
| 1 | ea | 1789 | 9" Torque Arm 11" Hex |



A&M Systems Doors B Option Detail

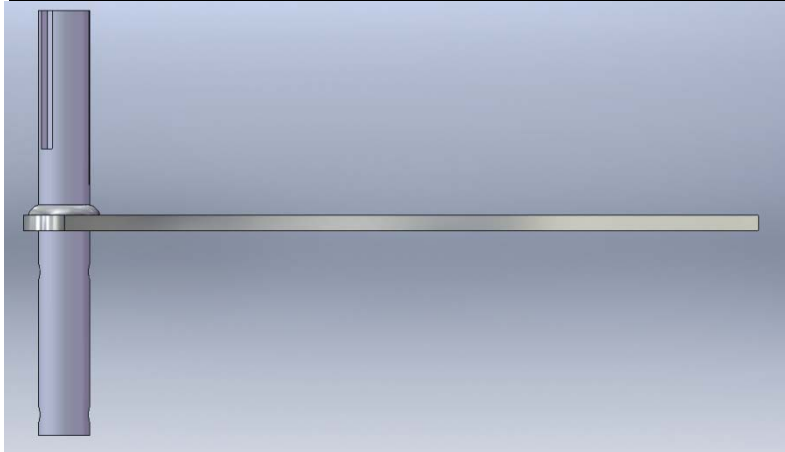
1831 Torque Arm AFT (B5)

| Qty | U/M | Part No | Description |
|------|-----|---------|---|
| 1 ea | | 1831 | 5/8" dia shaft with 45° offset 3/16"key |

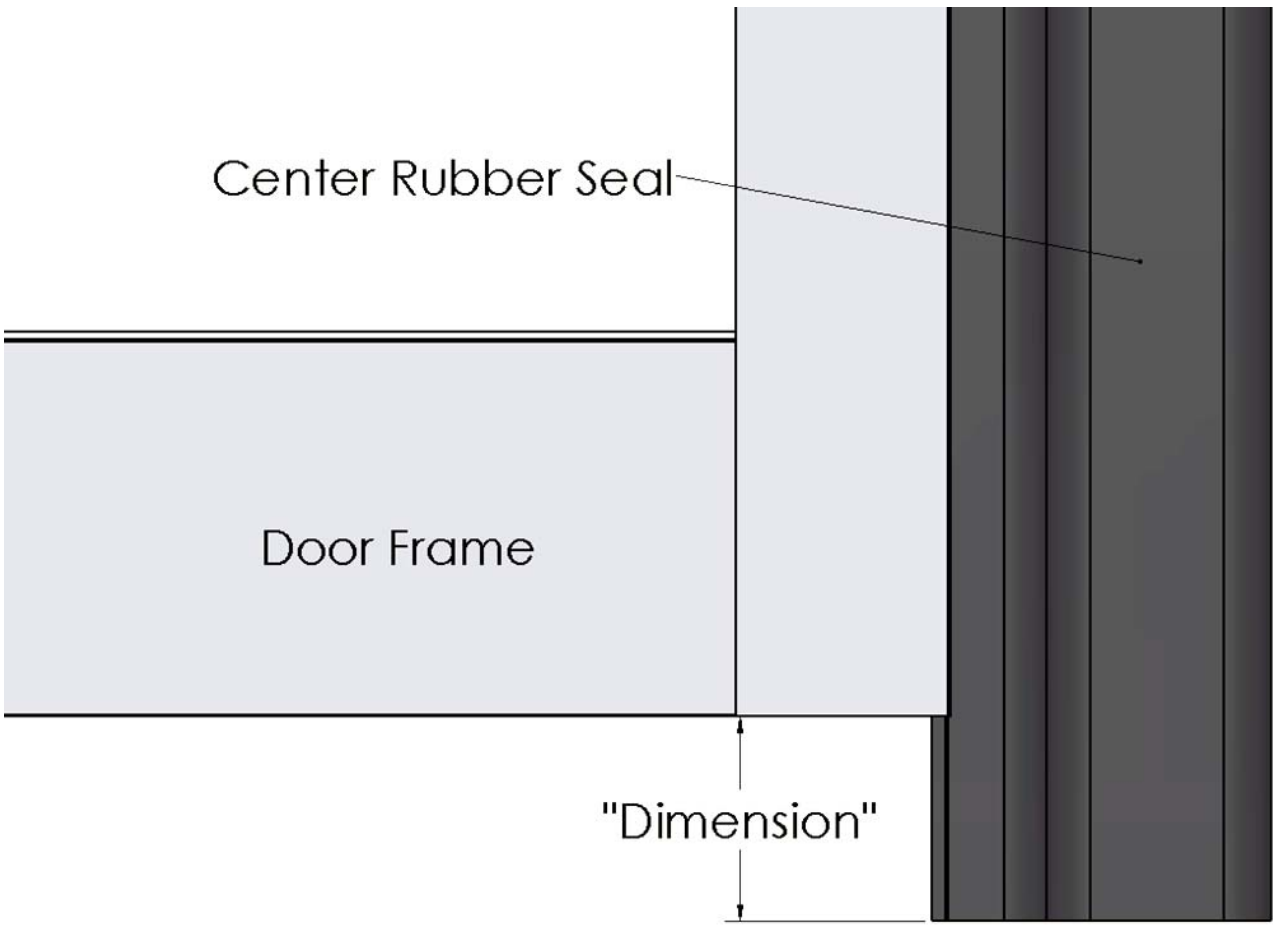


1832 Torque Arm FWD (B6)

| Qty | U/M | Part No | Description |
|------|-----|---------|---|
| 1 ea | | 1832 | 5/8" dia shaft with 45° offset 3/16"key |



A&M Systems Door G Option Detail



| "G" Option Code* | Dimension |
|------------------|-----------|
| G4 | 1/4" |
| G5 | 5/16" |
| G6 | 3/8" |
| G7 | 7/16" |
| G8 | 1/2" |

*All G-codes are in 1/16". For example G5 is 5/16", G20 is 20/16" or 1-1/4", G24 is 24/16" or 1-1/2". Not all available G-codes are listed.

